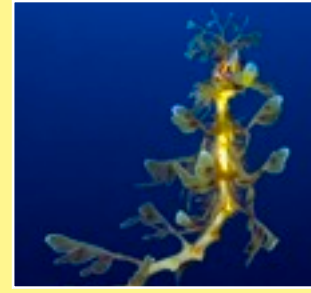




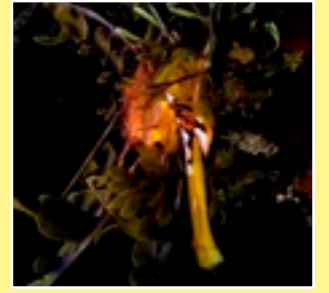
Location: Victor Harbor - Rapid Bay - Edithburgh
Contact: info@downunderpix.com
Mobile: 0419 819 083



Let us share:
Let us share with You our experience in the photographic techniques we have developed to capture great Leafy Seadragon images.



The Tours:
are suitable for all divers and underwater photographers, from beginners to professionals.



Our marine emblem:
The leafy sea dragon (Phycodurus eques) is endemic to the waters of southern Australia and is the South Australian marine emblem.

Victor Harbor - Rapid Bay - Edithburgh - South Australia

Leafy Seadragon Photography Tours

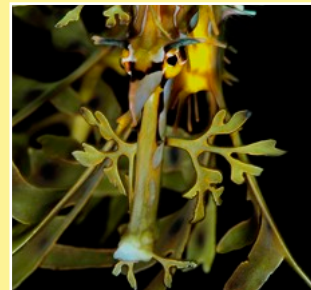




Location: Victor Harbor - Rapid Bay - Edithburgh
Contact: info@downunderpix.com
Mobile: 0419 819 083



Majestic creatures:
The Leafy Seadragon makes for a unique and interesting photographic subject.



Endangered Species:
The Leafy Seadragon is protected in all Australian Waters.



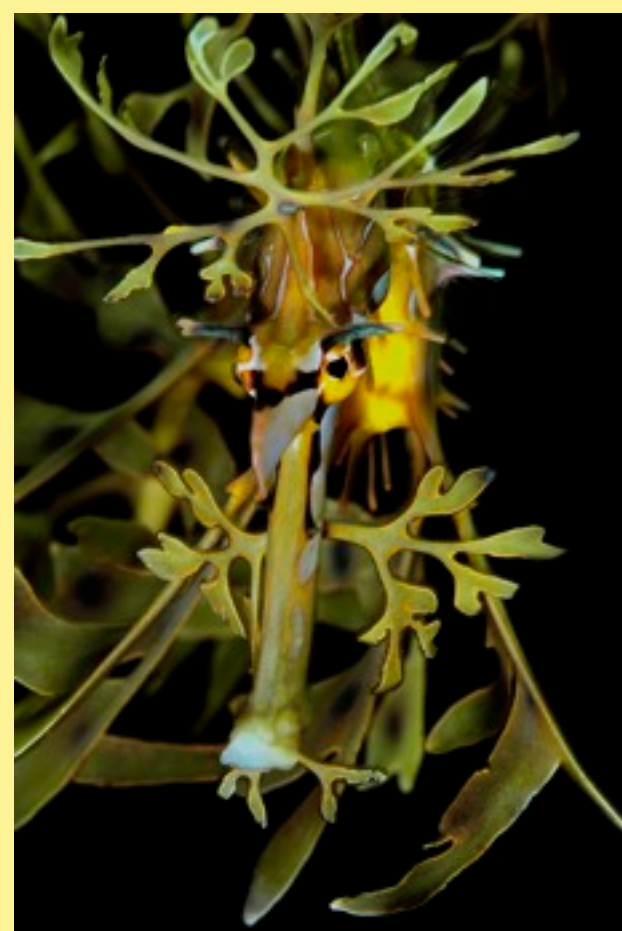
Where to find them?:
Leafy Seadragons can be seen in waters around Adelaide at sites such as the Victor Harbor Bluff, Rapid Bay jetty, Edithburgh and other local sites.

Victor Harbor - Rapid Bay - Edithburgh - South Australia

Leafy Seadragon Photography Tours

We run regular Leafy Sea Dragon photography tours. Downunderpix will take you diving with Leafy Sea Dragons and our professional photographer Paul Macdonald will take your photography with them. You will get to see the Leafy Seadragon up close and personal for an amazing diving experience. Following the session we will forward to you a CD of high resolution photographs. Alternatively if you want to photograph Leafy Seadragons yourself, Paul will take you diving with them. As part of the session Paul will share his knowledge and experience to help you capture the best possible images of this majestic creature.

The leafy sea dragon (*Phycodurus eques*) is endemic to the waters of southern Australia and are closely related to seahorses and pipefish. The



leafy sea dragon is the South Australian Marine Emblem and they get their name from the leaf-like appendages on their bodies. They resemble pieces of seaweed, which makes them difficult for predators to find in their natural habitat of kelp and seaweed. Leafies are generally brown to yellow in body color with spectacular olive-tinted appendages. As an adult they can reach a total length of 35 centimeters.

It is important to have an intimate knowledge of the leafy sea dragon in order to photographically capture its beauty.

To book in email:
info@downunderpix.com
For more information call Paul:
0419 819 083